



Building Your Stay

Tailor your trip

the
barns

info@thebarns.com | 07946 058130

The Barns, Lyonshall,
Herefordshire, HR5 3JN

Contents

- 3 Finding Your Feet
- 4 Local Activities
- 7 Places of Interest Nearby
- 10 Family Activities
- 11 Black & White Village Trail
- 13 Suggested Itineraries

- 15 Recommended Caterers
- 17 Eating Out
- 19 Shopping Locally
- 21 Local Pubs
- 23 Local Takeaways

- 24 Local Taxis

Finding Your Feet

Within this brochure we'll be discussing places to visit, many of which are in the towns shown below. As we are in a rural location, many of our local gems are outside of the towns but we will often use them as reference points.

The Barns are in the village of Lyonshall.

Our full address is The Barns at Upper House, Lyonshall, Kington, Herefordshire, HR5 3JN.
What3words: interview.rollers.voted, telephone: 07946 058130, email: info@thebarns.com.

Kington

3 miles/10 minute drive
Our nearest town. Great to get supplies, or visit the local market.

Hereford

17 miles/35 minute drive
Small city with a cathedral.
Visit the Independent Quarter for interesting shops.
A great stop for foodies!

Leominster

12 miles/20 minute drive
A nearby larger town with some supermarkets and larger shops.
Great for antique shops!

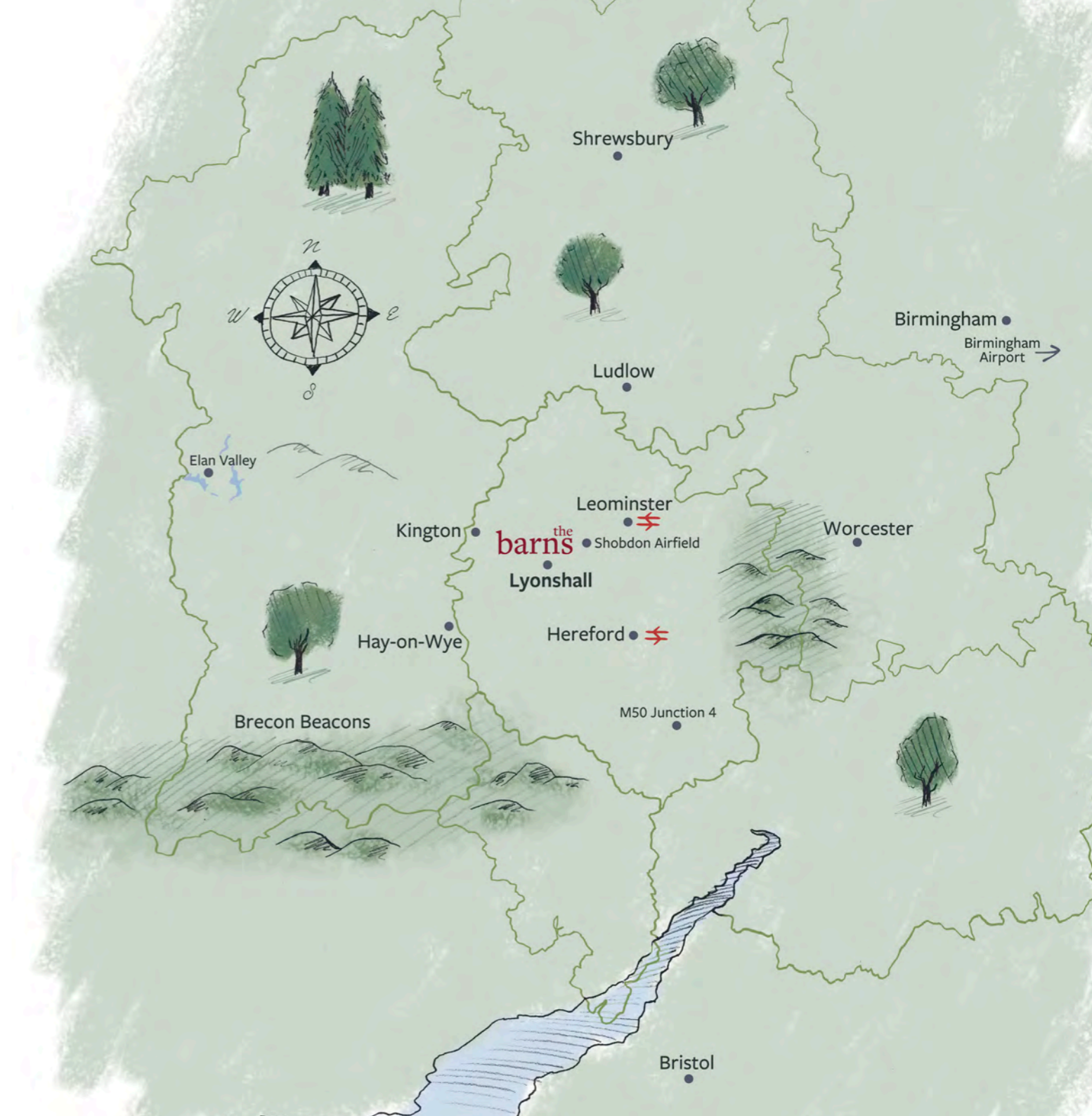
Ludlow

22 miles/35 minute drive
Medieval market town, busy with events and markets throughout the year.

Hay-on-Wye

15 miles/30 minute drive
This famous book town, full of great independent shops and cafés.

The nearest **airport** is Birmingham Airport (70 miles/1.5 hours)
If you're travelling by public transport, **train stations** are in Leominster and in Hereford.
Bus links direct to the village are available from Hereford, or you'll find further information on our recommended taxi companies later in the brochure.





Local Activities

Please do ring ahead to check seasonal opening times.

Clay Pigeon Shooting - The Big Shoot, Leominster, HR6 9PT. Tel: 0800 0789508, www.thebigshoot.co.uk

Target Archery, Tim Kelly, Clee Hill, Ludlow is available to come along to The Barns for target archery bringing a selection of bows for you and your guests to try (April – October). Tel: 07821 763408, email: kellytim948@gmail.com

Laser Clays, available onsite at The Barns. Tel: 07773 344217, www.laserclaysentertainment.co.uk

Adventure in the Hills

Horse Riding > situated at Glasbury just the other side of Hay-on-Wye, and very close to the canoeing start point if you wanted to try to combine the two activities. Tel: 01497 847351, www.tregoydriding.co.uk

Bryngwyn Riding Centre, Kington, HR5 3QN. Offers horse riding and riding lessons whether you are a total beginner, novice or experienced rider. Set on the edge of The Welsh Marches in a relatively undiscovered area of high moorland, providing some of the best riding terrain to be found in Wales. Tel: 01497 851669, www.ridinginwales.com



Photo Trish Henderson, Visit Herefordshire

Black Mountain Activities, Three Cocks, Brecon, Powys LD3 0SD. They offer activities including: white water rafting, kayak taster days, canoe & mountain bike hire, raft building, archery, caving taster days, gorge adventure, paintballing, rock climbing & abseiling. Tel: 01497 847897 or 01497 847824, www.blackmountain.co.uk

Taste for Adventure, The Boulder Barn, Holmer Trading Estate, Hereford. Offer an indoor bouldering gym facility/activity centre aimed at all ages and abilities. Tel: 01432 359392, www.boulderbarnclimbing.co.uk

< **Oaker Wood Leisure**, Kingsland, Herefordshire, HR6 9PT. Offers many activities including paintballing, quad trekking, high ropes, raft building, and target shooting. Tel: 01568 780111, www.oakerwoodleisure.co.uk

Green Spider Indoor Climbing, Rotherwas Industrial Estate, Hereford. An indoor climbing and bouldering centre, 1500sq metres of awesome climbing for all ages. Tel: 01432 277716

Go Ape, Wyre Forest, Bewdley DY14 9XQ. Tree-to-tree crossings, bouncy nets and all-terrain segways. www.goape.co.uk

Go-Karting, Herefordshire Raceway, Lower Hurst, Weobley, Herefordshire HR4 8QY. Tel: 01544 318334, www.herefordshireraceway.org.uk

Karting, Border Kart Racing, Presteigne. Great fun on the go-karts around a well organised track. www.kinshamraceway.co.uk, Tel: 01544 267006

Mountain Biking, Clive Powell, Rhayader. Guiding and rental in seriously steep and beautiful terrain. www.clivepowell-mtb.co.uk, Tel: 01597 811343

Quad Biking, Tracey and Vicky Phillips, Hillbrook, Craswall, Longtown, Herefordshire, HR2 0PH. A long-ish drive but through beautiful countryside and well worth the journey. www.mountainmayhem.com, Tel: 01873 860291

Rally, Phil Price Rally School, Knighton. Excellent off-road rally training. www.philprice.co.uk Tel: 01547 550300

Flying Lessons, Shobdon Airfield. Approx. 5 miles away - adventure for those who love the skies, with helicopter, glider or aeroplane lessons. Tel: 01568 708369, www.shobdonairfield.co.uk/learn-to-fly

Swimming/Gym/Squash - The Burton Hotel in Kington, which has an indoor pool, hot-tub, sauna, sunbeds, steam room and a huge gym. www.burtonhotel.co.uk/cloud9spa

Hereford Leisure Pool, St Martins Avenue, Hereford, HR2 7RQ. A number of swimming pools, golf course, exercise studio and indoor soft play area. www.haloleisure.org.uk

Take to the Water

Whitney Bridge Canoe Hire, Whitney Bridge, Herefordshire. Tel: 07837 265649, www.whitneybridge.com/canoeing

Wye Valley Canoes > Glasbury on Wye, Herefordshire. Tel: 01497 847213, www.wyevalleycanoes.co.uk

Want to Canoe, Hay on Wye, Herefordshire, Tel: 01497 820604, www.canoehire.co.uk

Boat & Canoe Hire, Beacon Park Day Boats, The Toll House, Canalside, Brecon, LD3 7FD, Tel: 0800 612 2890

Llangorse Lake, Brecon, LD3 7TR. Hire of rowing & fishing boats, kayaks, canadian canoes, pedaloos and sailing dinghies. Tel: 01874 658226

Wild Swimming on the River Wye - with Angela, a Wild Swim Specialist. Tel: 07811 482832, www.angelajonesswimwild.co.uk/



Explore the Hills

Hiking, Lots of fabulous walking all around us, including Offas Dyke Path.
www.offas-dyke.co.uk,
Offa's Dyke Centre: 01547 528753

Nordic Walking – Taster Session in the Border Hills with Ali Allen, who is an instructor based at The Walking Hub in Kington. Tel: 07756 172160,
www.kingtonwalkinghub.com

Alpaca Trekking in the Brecon Beacons - enjoy a unique and unusual experience! Booking essential.
www.alpacamyboots.com,
Tel: 07880 712756



Cat's Back Trail

Image Ed Jeavons and Visit Herefordshire

On the Course

Kington Golf Club > This golf course will simply take your breath away. Views of 7 counties from the highest golf club in England; and also some fairly strenuous walking over hilly terrain. Buggies can be hired. Hazards include gorse, bracken and marauding sheep. Tee times can be booked in advance. Tel: 01544 231320,
www.kingtongolf.co.uk

Grove Golf & Bowl - Great golf, exciting bowling in the heart of Herefordshire.
Tel: 01568 610602,
www.grovegolfandbowl.co.uk



Kington Golf Club

Tori Sutherland runs craft classes in drawing, painting, collage, felt jewellery making and felt bag making in her Bryncurl Workshop in Lyonshall. She is also available to come to The Barns for some of the activities.
Email: torisutherland71@gmail.com, 07961 606100, minimum of five persons required.

Groove Dance Fitness workshops with Elly Ingram, if you can move you can groove ...it's super easy and fun, sessions can be spiritual, calm, silly, sing-a-long, meditative, latin, hip hop, for team building and other themes. www.groovewithelly.co.uk,
email: info@groovewithelly.co.uk

Yoga with Gina Lucy - Gina offers one to ones and small private classes either here at The Barns or in nearby Dilwyn and Weobley, email: ginalucyyoga@hotmail.com, www.ginalucyyoga.co.uk, tel: 07808 777515

Indoor Games, E S Promotions. Deliver games including Scalextric, Casino and giant games. www.es-promotions.com.
Tel: 01536 310520

Serenity Pamper Parties - Providing high-quality pampering services, including corporate wellness and pamper parties. They offer a wide range of beauty, massage, and holistic treatments, tailored for any occasion. www.serenitypamperparties.co.uk

Cabalva Ceramics Pottery Studio – Throwing, Raku & Children's Pottery Workshops just outside of Hay-on-Wye.
www.cabalvaceramics.com

Eastnor Pottery, Ledbury, HR8 1RD. Pottery experiences situated on the Eastnor Castle estate, designed to explore and develop creativity in all ages and abilities. Will also come to The Barns. www.eastnorpottery.co.uk



Places of Interest Nearby

Please do call ahead before you visit to check seasonal opening hours.

Small Breeds Farm Park & Owl Centre, Kington, HR5 3HF. A very special place to interact with a superb collection of friendly rare breed animals and birds. Open daily from February half term to October half term, 10:30am - 5:00pm. *Tel: 01544 231109, www.owlcentre.com*

Westonbury Mill Water Gardens, Pembridge, HR6 9HZ. 3.5 acres filled with colourful moisture-loving plants and wildflowers with a café and plant nursery on site. Open daily between 1st April and 30th September, 11am-5pm. *Tel: 01544 388650, www.westonburymillwatergardens.com*

Rhodds Farm Garden, Lyonshall, HR5 3LW. A romantic timeless garden. Open Friday to Sunday between May and August, 11am-5pm. *www.rhoddsfarm.co.uk*

< **Hergest Croft Gardens**, Kington, HR5 3EG. 70 acres of gardens that contain more than 5000 rare trees and shrubs. Café on site. Open daily between the end of March and the end of October, 11am-4:30pm. *Tel: 01544 230160, www.hergest.co.uk*

Kington Markets, Market Hall, Kington. Local Foods & Craft every Friday, 9am-1pm. Art & Craft every 3rd Saturday of the month between April and December, 9:30am - 3:00pm.

Monkland Cheese Dairy, Monkland, HR6 9DB. A working dairy producing local artisan cheeses, located just outside Leominster. Visit their shop and café and arrange a cheese tour. *To book tours: www.monklandcheesmakers.co.uk, Tel: 01568 701870. For the cheese shop and café (open Mon-Sat, 10am-4pm): monklandcheesdairy.co.uk, Tel: 01568 720307*



< **Hereford Cathedral (Home of Mappa Mundi)**, Hereford Cathedral is open daily 10am-5pm. Mappa Mundi & Chained Library is open Monday-Saturday 10:00am-4:30pm. *www.herefordcathedral.org*

Croft Castle & Parkland (National Trust), Yarpole, HR6 9PW. Open daily 1st March - 31st October. Open week-ends only between 1st November and 28th February. *www.nationaltrust.org.uk/croftcastle*

The Judge's Lodging, Presteigne, LD8 2AD. A Victorian Revelation, step into the 1870s and see how the world looked to Victorian Judges. Opening times variable, see website: www.judgeslodging.org.uk

Old Chapel Gallery, Pembridge, HR6 9HB. Contemporary Fine Arts & Crafts. Opening times variable, see website: www.oldchapelgallery.co.uk, tel: 01544 388842

The Workhouse Gallery, Presteigne, LD8 2UF. Ethically produced gifts, cards, ceramics, jewellery, lighting, toys, sculpture and more. Open Wednesday to Saturday, 10am-4pm. www.theworkhousegallery.co.uk

The Orgasmic Cider Company, Eardisley, HR3 6NX. Local Craft Cider and Perry maker. Opening times Fridays & Saturdays 12pm-5pm and other times by arrangement. www.orgasmiccidercompany.co.uk

Penrhos Spirits Distillery > Lyonshall, HR5 3LH. Exceptional range of premium small batch spirits including Penrhos Dry, Apple & Elderflower, Rhubarb, Wonky Raspberry, Cucumber & Apple as well as Blueberry Gin Liqueur and Spiced Rum. Viewing strictly by appointment. Tel: 01544 231467, www.penrhosspirits.co.uk

White Heron Drinks, Lyonshall, HR5 3JA. Home of the luxury British liqueur British Cassis and British Framboise. Take a guided walk or e-bike tour around the blackcurrant and raspberry fields, tour the winery, and taste the fruits of their labour. Viewing strictly by appointment. Tel: 01544 340241, www.whiteherondrinks.co.uk



Photo by Dan Chubbs, Visit Herefordshire

< **Black & White Village Trail**, A motor/cycle route through some of the prettiest villages and most beautiful countryside. A 40 mile circular trail covering Leominster, Dilwyn, Weobley, Sarnesfield, Kinnersley, Eardisley, Kington, Lyonshall, Pembridge and Eardisland. www.blackandwhitetrail.org

Queenswood Country Park & Arboretum and nearby Bodenham Lake >, HR6 0PY. Queenswood is great for children; it has easy-access paths and waymarked trails including the Gruffalo Trail. There is a family-run café, visitor centre, shop, picnic facilities and adventure playground on site. *Please note that there are parking charges here.* Bodenham Lake is just a two minute drive from Queenswood, and is part of a 110 acre Nature Reserve. You can stroll through beautiful orchards as well as river and lakeside meadows. Take a picnic, sit in the hide, and watch birds and other wildlife. www.queenswoodandbodenhamlake.org





Offa's Dyke Visitor Centre, Knighton, LD7 1EN. Offa's Dyke is a large linear earthwork that follows the border between England and Wales. The visitor centre gives you an insight into this route, and part of it can be walked from the centre. Open daily 10am-2pm.

Water-break-its-neck, Warren Wood, New Radnor. A spectacular waterfall named for its rabbit warren which once provided a source of food. It's a hidden gem of a place, three routes to it - a short and easy option, a moderately difficult option, and a strenuous option. Trails start from Warren Wood car park.

Hergest Ridge is a long hill which traverses the border between England and Wales, and is part of the Offa's Dyke trail. A superb walk to delight any hill walker, a circular walk approximately 10.5 miles long with amazing views.

Pen Y Fan is the highest peak in South Wales. Situated in the Brecon Beacons National Park, there are four routes to the top: the gentle one (4 miles), the quiet one (7.5 miles) the tough one (9 miles) and the epic one (11 miles incorporating Corn Du). Stunning views in all directions.



< **Hay-on-Wye** is a small market town, known as 'The Town of Books'. It's world-famous for its second-hand and antiquarian bookshops. Hay is also home to lots of lovely independent shops selling an array of wares, has a great hardware store, an ice-cream shop, lots of cafés, a tapas bar and more. Hay is also home to Hay Festival, an annual literary festival.

Travel just a little further to Hay Bluff for panoramic views and paragliding - well worth a visit!

Ludlow, Famous for its castle ruins and food festival, Ludlow offers a host of eateries, has wonderful independent and unusual shops, markets most days, award-winning butchers and more..

< **Elan Valley**, The Elan Estate is situated in the town of Rhayader. The reservoirs are a chain of man-made lakes created by damming the Elan and Claerwen rivers within the Elan Valley. The reservoirs were built by the Birmingham Corporation Water Department, to provide clean drinking water for Birmingham. Enjoy walking, cycling, driving, and even ranger tours - there is something for everyone!



Family Activities

Although many of the activities within this booklet are family friendly, we've put together a selection of nearby activities which we think are particularly suited to a trip out with the little ones.

The Coop Play Café, Kingstone. The Coop is a children's play centre and café, offering a wide range of parent and toddler groups, indoor and outdoor play activities and a wonderful café. Follow them on social media to see what's happening: www.playcoop.co.uk

The Little Blue Elephant Play Café, Ewyas Harold. A play café & party venue for 0-6's and their families, offering fun and imaginative developmental play, crafts & activities, alongside a gorgeous café. www.blueelephantplaycafe.co.uk

Make It Happen, Hereford, HR1 2DP. Offers fun creative arts and crafts workshops, from sewing to felting and crochet to embroidery, they have a super range of workshops suitable for both adults and children. www.make-ithappencreativdreams.com

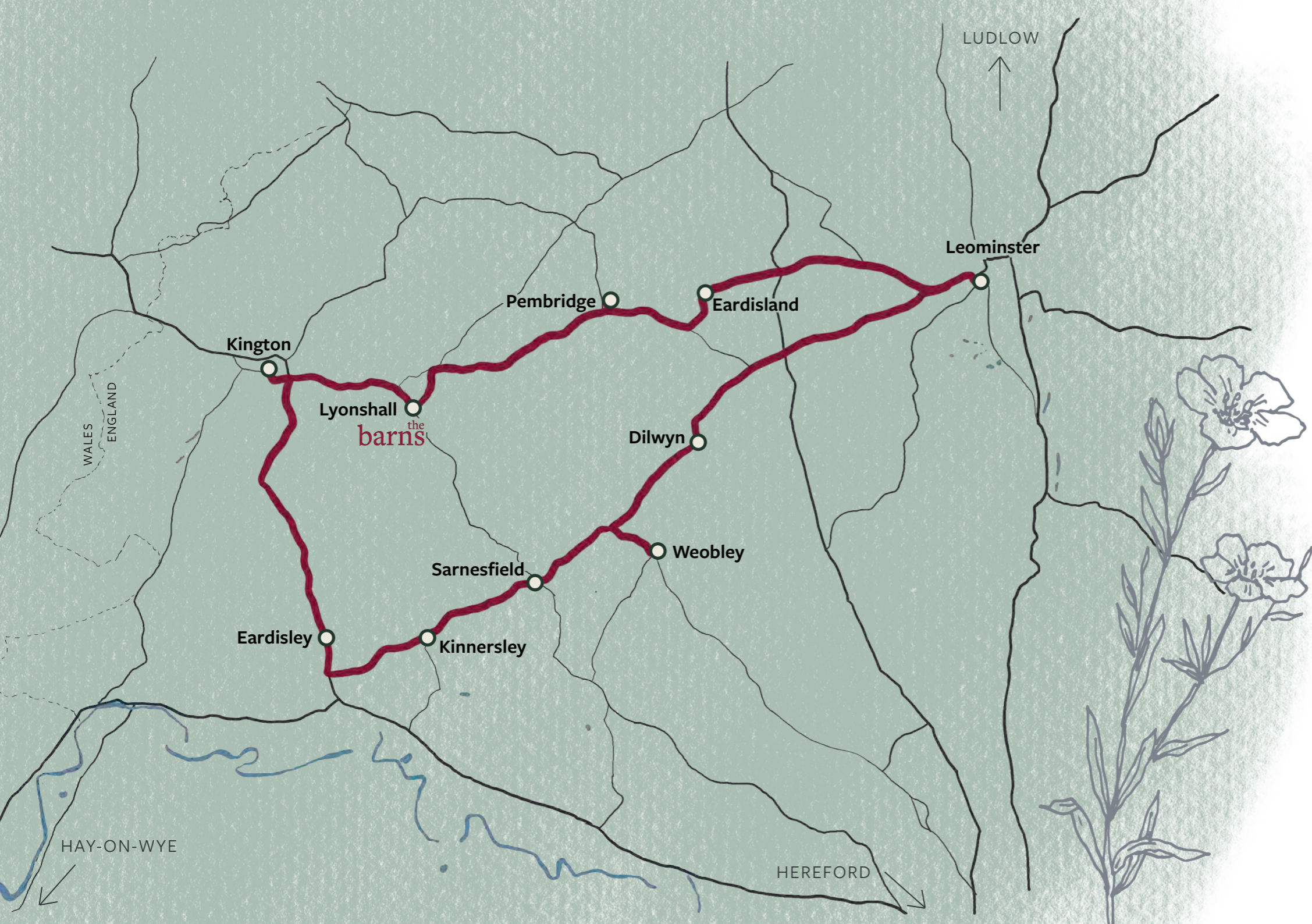
< **Small Breeds Farm Park**, Kington, HR5 3HF. The Farm Park houses an amazing variety of friendly miniature animals and birds including pigs, donkeys, horses and goats. It also has one of the largest and most important collections of owls in Europe. There is a tea room and free parking on site. www.owlcentre.com

Llama Trekking, Ewyas Harold, HR2 0HB. You will help call in, catch, halter, groom and walk your llama through the fields and farm, or beyond through the glorious Herefordshire countryside. Llama Treks are tailored to your party's requirements - they don't mix parties of trekkers so only your family or party will be taking your trek. www.oldkingstreetfarm.co.uk

Mountain Mayhem, Craswall, HR2 0PH. Offers a range of activities suitable for all ages; Clay Pigeon Shooting, Hovercrafting, Indoor Shooting, Quad Biking, Paintballing, Rally Karting, Gorge Walking, and Mountain Biking. www.mountainmayhem.com

Rowlestone Court Dairy, Stroll through the woodlands and meadows whilst taking in views of the Black Mountains, see the cows which provide the milk and cream for their award winning Farmhouse Ice cream, stop by the café and enjoy cakes, pastries, light lunches and a mouth-watering ice cream flavours, have fun in the play area too. Opening Hours: Wednesday to Friday 11am - 4pm; Saturday, Sunday & Bank Holiday Mondays 11am - 5pm, www.rowlestoneicecream.co.uk

Monkland Dairy Cheesemaking, Shop & Cafe, The Pleck, Monkland, Leominster, Herefordshire, HR6 9DB. Tel: 01568 720307, www.monklandcheesedairy.co.uk



Black & White Village Trail

(40 mile circular route)

The Black & White Village Trail is a **circular route around North Herefordshire**, highlighting the historic villages in the area that have hundreds of timber framed buildings. It's a driving route, but if you're feeling adventurous you could cycle it.

The towns and villages have a host of things to see, and **we are on the trail here in Lyonshall** so you can start the route right from the doorstep!

Kington and Pembridge are our nearest stops, but the others are well worth a visit. We'll share a little more about our favourite things to do on the next page.



Lyonshall

Start here in Lyonshall with a wander into the village. Pop and see our **historic church**, or go along to **Penrhos Spirits** to try out some of their delicious creations (must book ahead).

< Pembridge

A really exciting village, less than a 10 minute drive away. Features **The New Inn**, a 700 year old pub, a historic market hall, independent gems and a **pebble beach**. If you're stopping for coffee why not visit **Bloom & Grind**, or if you're visiting a little later **The Cider Barn** will serve up a feast!

Eardisland

Full of black and white buildings, this village sits beautifully on the River Arrow. There's a **medieval church**, and a castle mound to visit. Once you've had a look around, why not pop to **The Cross Inn** for a quick drink?

Leominster

The biggest town on the route, Leominster is a lovely **market town** with lots to see and do. As you walk around the town centre, you'll see the timber-framed shops. Drapers Lane Delicatessen is a great stop to **get some supplies!**

Dilwyn

Around a village green are a number of timber-framed homes - it's a **designated conservation area**.

Weobley

A village of many black and white houses, some dating back to the 1400s! You'll spot Weobley's famous **black and pink house** on the way into the village. There's plenty to do, and a handful of pubs and restaurants.

Sarnesfield

This small village has a **12th century church** with stunning stained glass windows.

Kinnersley

Mainly noted for its castle, which has been rebuilt as an **Elizabethan Manor house**; Kinnersley also has a **historic church** that's worth visiting.

Eardisley

Eardisley has many timber framed buildings as well as an ornately carved church font at **St Mary's Magdalene**. If you've got a bit of time, why not pop to **Orgasmic Cider Company** nearby?

Kington

Our **local market town** is a great day trip, less than 10 minutes away from The Barns. It's a feast of historic buildings and independent shops. If you need a wind-down, pop to **The Burton Inn** where they have a swimming pool and spa on-site.

Suggested Itineraries

If you need to take a breather but you're not sure where to go, we've put together some itineraries with some nearby spots to discover. If you'd like more ideas, have a look at our Local Activities pages.



Penrhos Spirits

Wandering around Lyonshall

If you need a bit of fresh air but don't want to travel too far, our village of Lyonshall has a lot to offer. We are part of the **Black & White trail**, so even a little wander around the village is a nice treat. You could **pack up a picnic** and have a walk and a feast!

Within the village we have **Rhodd's Farm Garden**, or **Penrhos Spirits Distillery** - though book ahead if you'd like a tour and a taste!

If you like a walk, feel free to ask us for our maps for our **circular walks** around the village.

Fancy popping out to Pembridge?

Pembridge is less than ten minutes drive away. Why not see some of the **Black & White trail** and wander around Pembridge before a **coffee and cake** in Bloom & Grind? Old Chapel Gallery has some great **contemporary craft** if you fancy a look.

Or, pop to the **Water Gardens** for a wander around the imaginative spaces. Feeling hungry? Pop to **The Cider Barn** or **The New Inn**.



Photo by Naomi Moyo-Wilson
Visit Herefordshire



Hergest Croft Gardens

Spending the day in Kington?

Nearby Kington has lots to offer for a small town! **The Burton Inn** is a great stop if you fancy a swim - as well as being a pub, there is a **spa on-site!**

If you're visiting on a Friday, **pop to the market** and see what's on offer.

Just outside of Kington is **Hergest Croft Gardens** - extending to over 70 acres with a coffee shop on site.



Visiting Hay-on-Wye?

Hay-on-Wye is renowned for being a **book town**, and is full of fantastic book shops and an array of **independent businesses and eateries**.

Pop to **Hay Castle**, who often host events and workshops; have one of Shepherd's **infamous ice creams**, or pop to Tomatitos Tapas Bar, The Granary, or The Three Tuns for a bite to eat.



Taking a trip to Hereford?

Leading along to the Cathedral, The **Independent Quarter** on Church Street - is full of wonderful **independent cafes, shops and galleries**. You'll get a great lunch at The Garden Café - why not get a takeaway and walk down for a **picnic by the river?**

In the afternoon, visit the **Mappa Mundi at the Cathedral** and round off the day with dinner at **The Yard** or **Ponte Vecchio**.

Shopping Locally

We would love you to support our local tried & tested suppliers if you can. Please remember to check their seasonal opening times.

Butchers:

- **Mark Hurds**, Broad Street, Weobley. *Tel: 01544 318205*
- **Paul Lewis**, High Street, Kington. *Tel: 01544 230527*

Greengrocer/Fishmonger/Game Dealer:

- **The Grapevine**, High Street, Kington. Award-winning fishmonger and game dealer. *Tel: 01544 231202*

Meats & BBQs:

- **The Fork & Chicken**. Local chef Hugh Sawyer, specialising in providing customers with a selection of top quality meats, rubs, sauces, vegetarian dishes and other barbecue essentials as well as offering woodfired dishes which are simple to reheat. Hugh offers delicious meals available to order for collection or delivery. *Tel: 07538 037770 or follow on Facebook.*

Farm Shop:

- **Oakchurch Farm Shop and Garden Centre** > Brecon Road, Staunton-on-Wye. A large family-run farm shop selling an array of produce. *www.oakchurch.net*

Delicatessen:

- **Number 25**, High Street, Kington. Great selection of cheeses, some local. *Tel: 01544 230330*
- **River Cafe Deli**, Glasbury. Great spot to pick up supplies for a picnic by the river. *Tel: 07805 126883*

Cheese:

- **Monkland Cheese Dairy**, Monkland. A working dairy producing local artisan cheeses, located just outside Leominster. Visit their shop and café and arrange a cheese tour. *Tel: 01568 720307, www.monklandcheesedairy.co.uk*



Milk:

- **Teme Dairy**, Delivery of milk, dairy and other produce direct to the doorstep. Deliverys to Lyonshall on Tuesdays and Saturdays. *Tel: 01584 811857, www.temedairy.co.uk*

Local Cider:

- **Orgasmic Cider**, near Eardisley (approx 10 minute drive). Local farmers/brothers Steve & Andrew Layton produce some excellent ciders and perry with local apples and pears. Visit their shop, walk their orchards, visit the production building, and sample some drinks. They will also deliver drinks to The Barns ready for your arrival upon request. *Tel: 07773 037448.*

Local Gin:

- **Penrhos Spirits**, based here in Lyonshall. Offer an exceptional range of premium small batch spirits, produced in a copper still in a 250 year old converted cattle shed: Penrhos Dry, Apple & Elderflower, Rhubarb, Wonky Raspberry, Cucumber & Apple as well as Blueberry Gin Liqueur and Spiced Rum. They will also deliver drinks to The Barns ready for your arrival upon request. *Tel: 01544 231467, www.penrhosspirits.co.uk*

Supermarkets:

- **Co-op**, Crabtree Road, Kington. Open until 11pm. *Tel: 01544 230190*
- **Nisa Local**, High Street, Kington. Open until 8pm. *Tel: 01544 230593*
- **Kington Service Station**, Headbrook, Kington. Open until 9pm for fuel and small essentials. *Tel: 01544 230013*

A little further afield you have Aldi, Asda, Morrisons, Sainsburys, Tesco and Waitrose in Hereford City, 17 miles from The Barns. These all offer Click and Collect, and the majority can deliver to The Barns.

In Leominster, 12 miles away, there is an Aldi and a Morrisons.



Penrhos Spirits



Recommended Caterers

- **Field2Fork Catering** - Katie Light offers fabulous canapés, delicious evening meals, breakfasts/brunches and even delivered suppers. Katie is famed for her sharing platters and boards, and also has a mobile pizza van which she is happy to bring to The Barns, see overleaf. *Call Katie on 07870 379086 or email field2forkcatering@gmail.com*
- **The Cider Barn in Pembridge** - Chef Sophie offers catering at The Barns, she will deliver and set up your meal from a choice of menus or is more than happy to create a bespoke menu just for you... Sophie has also started offering Hog Roasts & BBQs. *Call 01544 388161 or email: functions@the-cider-barn.co.uk*
- **Megan Lyke** is new to the catering sector, her strap line being 'contact me for all things edible!' Meg is a personal chef available for private catering and drop off catering. *Email meg.lyke1@gmail.com, follow on Facebook: [Megan_Lykecatering](#), Call: 07964 065477*
- **Edesia Events** - Their Michelin-trained chefs, backed by culinary arts expertise, create innovative menus using the finest British ingredients. Combining tradition with modern elegance, they bring impeccable service and unforgettable flavours. *contact@edesiaevents.co.uk, Tel: 01432 598516*
- **Your Plate or Mine** - creating unique food experiences for all events, Simon loves to create menus especially for you! *www.yourplateormine.co.uk Tel: 07494 797321*
- **Trigg Food** - A local catering company based in Hay-on-Wye and the surrounding areas. They match your vision and find inspiration to create delicious food for bespoke events. They collaborate with the best suppliers to ensure everything is fresh, in season and locally sourced. *www.triggfood.co.uk Tel: 07946 054239*
- **The Fork & Chicken** - local chef Hugh Sawyer has opened a shop in Kington specialising in providing customers with a selection of top quality meats, vegetarian dishes, rubs, sauces and other bbq essentials as well as offering to prepare meals for our guests to pre-order and pick up. *Follow on Facebook.*
- **Christine's Catering** - Innovative high quality catering services from experienced caterers based in Herefordshire. Whether it be a celebration, corporate event or at-home dining, Christine and her team can support your needs: *www.christines-catering.com*



Casual Dining

- **Jimmy the Pizza Hut** – Katie and Hamish Light regularly visit The Barns in their mobile pizza van serving delicious wood-fired pizzas. Call Katie on 07870 379086 or email: field2forkcatering@gmail.com
- **Heggies of Hereford** – offer Hog & Beef Roasts, BBQs and Brunches, Tel: 01432 273300 or email sales@heggiesofhereford.co.uk
- **Origin Pizza** – Wood fired pizzas available Mondays to Wednesdays as a mobile caterer and available to order for collection in Hay-on-Wye Thursdays to Saturdays, Tel: 07703 668320
- **M&S Wood Fired Pizza**, available to come to The Barns, multiple topping choices, cooked to order, 07485 013110 or message via Facebook
- **Isabel's Bakehouse, Gloucester** for Mobile Creperie, Celebration & Wedding Cakes. Tel 07966 592368/01594 833820, email: isabel@isabelsbakehouse.com www.isabelsbakehouse.com
- **Drapers Lane Delicatessen** - Available to come to The Barns to cater events, or you can pop by and pick up some salad boxes or supplies to make some sharing platters. They're in nearby Leominster. www.draperslanedeli.co.uk, email: draperslanedeli@gmail.com, Tel: 01568 250290

You are of course welcome to use any caterer not on this list to come and cater for you at The Barns, we just ask for their contact details, a copy of their insurance certificate and public liability document.

Eating Out

We recommend booking well in advance to avoid disappointment.



The Riverside at Aymestry

Within 10 miles of The Barns:

- **The Cider Barn, Pembridge** - Café bar and Restaurant in 400-year-old barn. Prices from £10. Lots of space, perfect for large parties. Offers Sunday Lunch. Visit www.the-cider-barn.co.uk, call: 01544 388161 or email: functions@the-cider-barn.co.uk
- **Bloom & Grind, Pembridge** - Flower shop and café serving breakfast and light lunches. Tel: 07581 751473
- **The Stagg Inn, Titley** - A fabulous pub with restaurant. Prior booking is essential for groups. You may be lucky and get lunch at short notice. Their Sunday Lunch is thoroughly recommended. Visit: www.thestagginn.com, call: 01544 329 966, email: info@thestagginn.com
- **The Harp Inn, New Radnor** - Stunning views and a simple menu; lunch prices from £14. www.harpinnoldradnor.co.uk, Call: 01544 350655
- **The Crown Inn, Dilwyn** - 17th Century pub serving hearty Italian food and local ale. Tel: 01544 318063
- **The Bells Inn at Almeley** - highly recommended! Local beers and a friendly atmosphere, Lisa & Jason are great hosts. (Walkable if keen hikers). Open 9am - late every day for lunches only, but please do ring first. Tel: 01544 327216
- **The New Inn, Pembridge** - traditional black & white pub. Take a lovely circular walk around Pembridge ending up at the pub for a hearty Sunday Roast for around £10. Tel: 01544 388427
- **The Corners Inn, Kingsland** - Sunday Lunch spot, big enough to take a large group. Tel: 01568 708385, www.thecornersinn.com
- **The Angel Inn, Kingsland** - great bar meals, friendly atmosphere. Tel: 01568 709195
- **The Lal Bagh in Bell Square, Weobley** - delicious Indian cuisine. Will deliver if plenty of notice given. Tel: 01544 318210
- **The Green Bean Café, Weobley** - Serves tea & coffee, homemade cakes and light lunches. Their shop next door sells local produce and fresh bread. Tel: 01544 318865
- **The Swan, Kington** - Bistro style and reasonable food, probably the best in Kington. Tel: 01544 230510
- < **The Riverside at Aymestry** - traditional pub on the river, great Sunday Lunch. Tel: 01568 708440



Options a little further afield (30 minute drive):

In Hereford:

- **The Yard** - four Hereford restaurants in one location: Burger Shop, Maneki Ramen, Leaven Pizza and The Bookshop. Possible to order a mixture from all four through a QR code system on the tables. www.aruleoftum.com/the-yard
- **The Beefy Boys** - Award-winning burgers in a casual space. Book ahead for groups. www.thebeefyboys.com
- **Ponte Vecchio** - Delicious family-run Italian cuisine cooked from scratch. Do order ahead if you can so that the chef can prepare. Email: pontevecchio1@googlemail.com, tel: 01432 279714
- **Miller & Carter** - Steakhouse restaurant amongst a larger shopping area. Tel: 01432 261309

In Hay-on-Wye:

- **Tomatitos Tapas Bar** - small dishes of home cooked food, inspired by the flavours of Spain. www.haytomatitos.co.uk
- **The Swan** - New modern, local menus, including seasonal Welsh dishes using produce from local suppliers. www.swanathay.co.uk
- **The Granary** - Family-run café for lunch in a relaxed atmosphere with outdoor seating. Tel: 01497 820790
- **The Three Tuns** - 16th century pub in Hay-on-Wye serving a delicious Italian inspired menu using locally sourced ingredients, tel: 01497 821855

In Ludlow:

- **The Fish House** - Traditional fishmongers with fish and seafood bar. Tel: 01584 879790
- **Fishmore Hall** - Bistro lunch, fine dining and afternoon tea available. Tel: 01584 875148
- **The Charlton Arms** - Pub overlooking the river in Ludlow, good food and local ales. Tel: 01584 872813
- **Mortimer's** - Fine dining restaurant serving modern British and French food. Tel: 01584 872325

This list isn't exhaustive, but includes some of our favourites.



The Bells Inn

Local Pubs (*under 10 minutes away*)

Please do call ahead to check seasonal opening hours.

Close By:

< **The Bells Inn**, Almeley, 2.8 miles (8 minute drive).

It's possible to walk here, ask for our walking map.

Tel: 01544 327216

A warm, friendly pub. Often hosting food pop-ups, quizzes and events.

The Swan Hotel, Kington, 3.2 miles (8 minute drive).

Tel: 01544 239433

Steakhouse and hotel located in the centre of Kington.

The Stagg Inn, Titley, 3.5 miles (10 minute drive).

Tel: 01544 329966

Locally-sourced food, open all year for lunch and supper.

The Burton Hotel, Kington, 3.2 miles (8 minute drive).

Tel: 01544 230323

Hotel serving lunch and dinner throughout the week. A spa and swimming pool also on site.

Pembridge:

The Cider Barn, Pembridge, 5 miles (10 minute drive).

Tel: 01544 388161

A café and restaurant inside a 450 year old, Grade II listed barn, celebrating Herefordshire's produce.

The New Inn, Pembridge, 4.2 miles (8 minute drive).

Tel: 01544 388427

Historic local pub, parts dating back to the 14th Century.

The Red Lion, Pembridge, 4.2 miles (8 minute drive).

Tel: 01544 388007

A welcoming pub often hosting live music.



The Harp Inn

Local Pubs (*10-25 minutes away*)

Further Afield:

The Cross Inn, Eardisland, 7 miles (12 minute drive).
Tel: 01544 329300

A community-focused pub focusing on sourcing independent beers and good food. Located on the river.

< **The Harp Inn**, Old Radnor, 7.5 miles (13 minute drive).
Tel: 01544 350655

Family-run pub in the most stunning location, set upon a hilltop with views overlooking the Radnor Valley. Fantastic walks nearby.

The Riverside Inn, Aymestry, 9 miles (15 minute drive).
Tel: 01568 708440

A very exciting restaurant, with everything being crafted fresh on-site. Much sourced from their own kitchen gardens, orchards, and foraged locally.

The Boat Inn, Whitney on Wye, 9.3 miles (10 minute drive).
Tel: 01497 831223

A country inn on the banks of the River Wye. Offers Sunday Lunch.

The Oak, Wigmore, 12 miles (20 minute drive).
Tel: 01568 770424

Converted 16th Century coach inn, featured in the Good Food Guide and the Michelin Guide.

The Maidenhead, Orleton, 13 miles (23 minute drive).
Tel: 01584 831686

A welcoming pub with good pub food and a lovely outdoor seating area.

The Lion, Leintwardine, 15 miles (25 minute drive).
Tel: 01547 540203

A welcoming pub with good pub food and a lovely outdoor seating area.

Local Takeaways

In Kington:

Angel Fish Bar, Fish & Chips, Bridge Street, Kington,
Tel: 01544 230684

Open Monday-Sunday, 4.30pm-10.00pm

Taj Mahal Indian Restaurant, Bridge Street, Kington,
Tel: 01544 231999

Open Daily 6pm-10.30pm

Bamboo Garden, Chinese, Church Street, Kington,
Tel: 01544 231089

Open Tuesday-Sunday, 5pm-10pm

No.36 Thai Kitchen, Kington,
Tel: 07506 867752

Open Tuesday-Saturday, 5pm-9pm

Further Afield:

The Lal Bagh, Indian, Bell Square, Weobley
(15 mins away) *Tel: 01544 318210*

Open Daily, 6pm-11pm

The Pembridge Café, Pembridge,
Tel: 01544 388922/07812 127156,

the-pembridge-cafe.edan.io

Friday & Saturday night Pizzas, 5pm-8pm

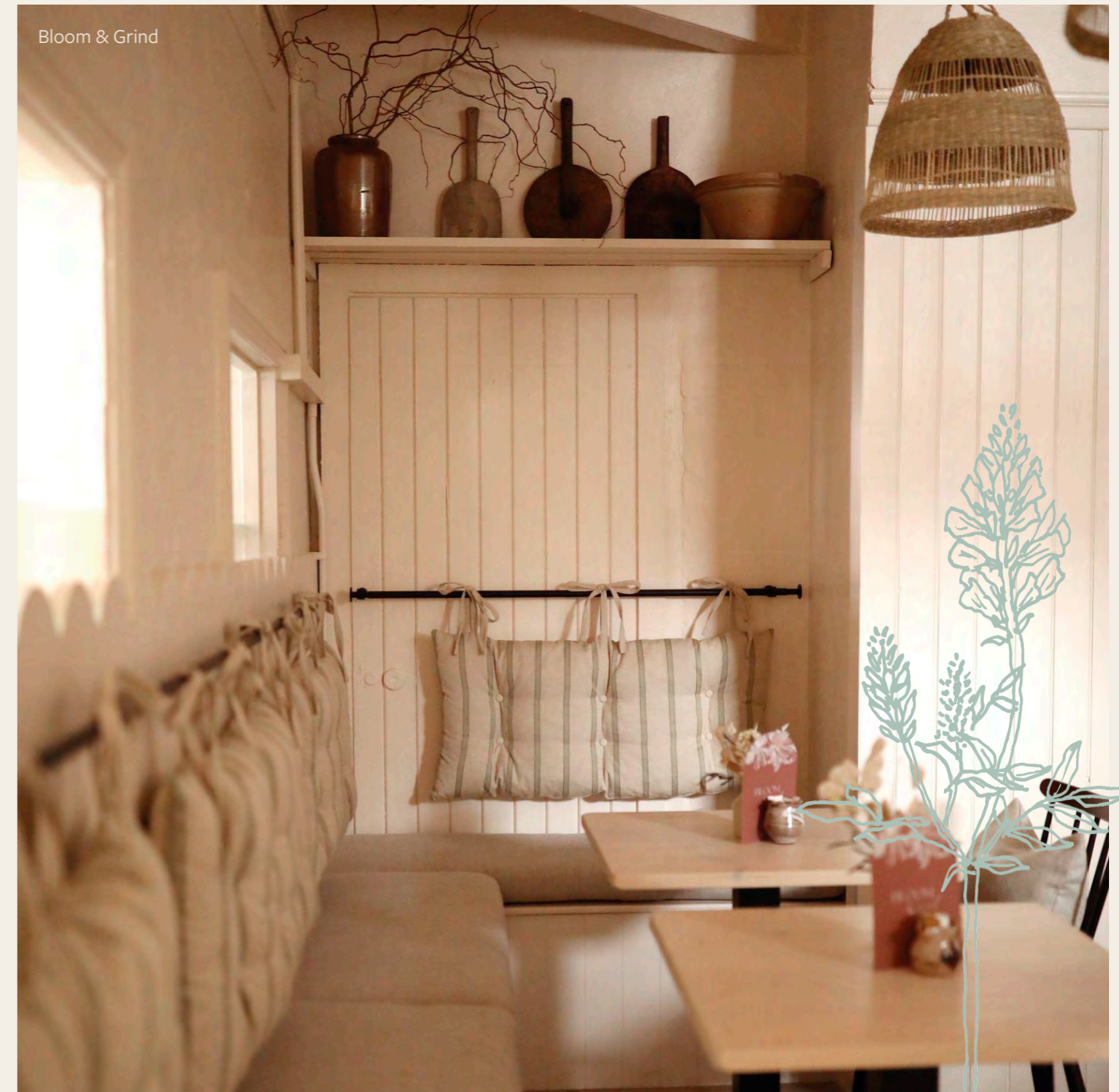
The Pizza Box, Pop-up locations nearby,
thepizzaboxhay.co.uk

Jasmine House, Cantonese, Meadow Drive, Credenhill
(20 mins away) *Tel: 01432 760945*

Open Daily (not Tuesdays) 5pm-10.30pm

Bloom & Grind, Flower shop and café in
Pembridge, **open every day.** *Tel: 07581 751473*

Please find some menus that we have left for you in The Barns.





Taxi & Minibus Hire

Kington Taxis, Tel: 07884 404566

Radnor & Kington Taxis, Tel: 01547 560205

Leominster Taxis, Tel: 01568 616964

Priory Cabs, Tel: 01568 612145 or
07484 021836

Gold Line Leominster, Tel: 01568 611100

Eric (6 seater), Tel: 07946 457848

Paul Crow, Tel: 07850 261556

M & S Coaches (up to 52 seaters),
Tel: 01568 612803

Owen Bros (up to 52 seaters),
Tel: 01547 528303 or 07970 550195

Victor/Vasco Atlantis Taxi, Tel: 07903 512013

Mini Bus - Hereford Minibus & Coach Hire,
Tel: 07875 492899

Big Dave's Private Hire (7 passengers),
Tel: 07870 647611

To arrange pick-up/collection, the address is The Barns at Upper House, Lyonshall, Kington HR5 3JN.

